

**Sibelmed®**

**+40**  
años  
years



Elegant and  
innovative design



Assembled in less  
than 7 minutes



High level of sound  
absorption



10 standard models  
+  
special dimensions

# S-PREMIUM

## AUDIOMETRIC BOOTH

CE Class I

[www.sibelmed.com](http://www.sibelmed.com)

# S-PREMIUM · audiometric booth

## S-PREMIUM

The **S-Premium** audiometric booth from Sibelman is a **CE Class I** Medical device regulation (EU) 2017/745, manufactured by **SIBEL, S.A.U - SIBELMED**, with a high level of acoustic insulation. Thanks to its elegant design and innovative assembly system, the **S-PREMIUM** booth can be used in a wide range of specialized fields: from ENT consultations or prevention services to optical shops and hearing-aid centers.



It has been designed with the highest quality new materials that are sustainable and free from harmful substances.

In addition, the **S-PREMIUM** is finished both inside and outside with washable panels.

## Patented assembly system

Our revolutionary system, based on bricks, enables a quick and easy assembly without the need for specialized staff.

The booth structure does not require screws. It is based on a patented system of wooden connecting joints with a spring-mass system.

## Universal Connection

The **S-Premium** booth is compatible with all audiometers on the market, thanks to a new universal connection system that allows up to 10 connections between the interior and exterior of the **S-Premium** booth (Jacks, USB, red..).

## Lighting

Illumination without a switch; it is activated by a movement sensor, resulting in energy savings and offering the patient a comfortable and elegant light.



Elegant and innovative design



100% Washable



Glass door



Spacious effect



Easy to assemble



Without screws



New universal connection system



Light with movement sensor



**SIBELMED** on YouTube: visit our channel and you will see the **S-Premium** booth assembled in less than 7 minutes.



Integrated absorbent panels



Reversible window



Patented system

# S-PREMIUM · audiometric booth

## Regulations

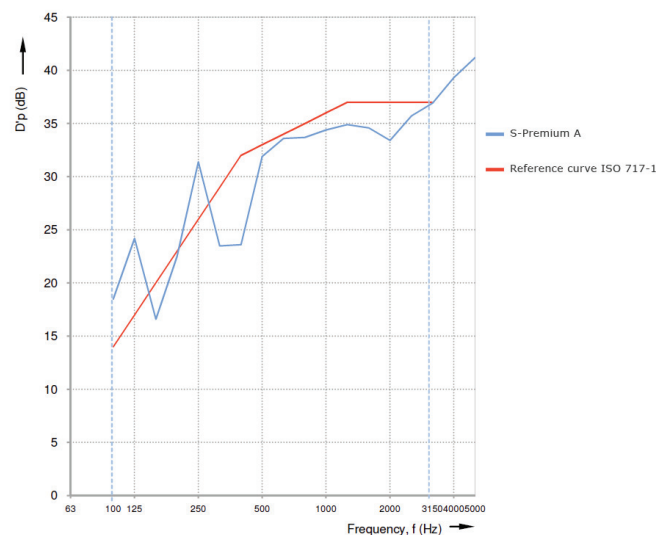
The S-PREMIUM booth is a CE Class I Medical device regulation (EU) 2017/745. It also complies with:

- EN 60601-1:2006+AC:2010+A1:2013
- EN 60601-1-6:2010+A1:2015
- EN 62366:2008+A1:2015
- EN ISO 14971:2019
- EN 1041:2008+A1:2013
- EN ISO 15223-1:2016
- ROHS II
- RAEE RD 110/2015 (Spain) (WEEE - Waste of Electrical and Electronic Equipment)

Enables compliance with the audiometry standards ISO 8253-1 and ANSI S3.1

The places dedicated to the practice of periodic hearing tests do not need to exceed the sound precision levels referred to in the standard EN ISO 8253-1:2010. Although it is always preferable to use an audiometric booth, where sufficient levels of acoustic insulation are achieved for a correct audiometric test.

## Acoustic Insulation



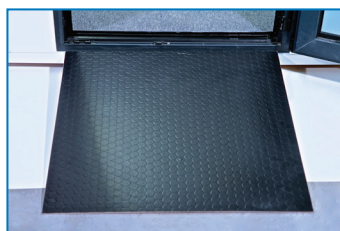
Test certified by SoundLab laboratory

## Models

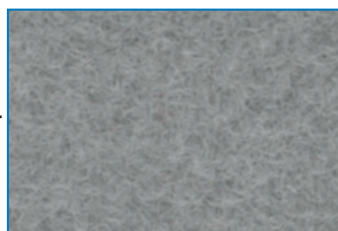
Dimensions (cm)	Exterior
Model A	129x129x212
Model B	138x106x222
Model C	198x168x222
Model D	198x198x222
Model E	228x198x222
Model F	228x228x222
Model G	258x228x222
Model H	258x258x222
Model I	288x258x222
Model J	288x288x222
Model K	special dimensions

## Optional Modules

- Wheelchair access ramp for patients with reduced mobility (except model B)
- Floor with an easy-to-wash surface
- Forced ventilation, which improves ventilation in the booth
- Change in the door-opening direction



Access ramp



Washable floor



Silent forced ventilation

# S-PREMIUM · audiometric booth

## Technical specifications according to model

Model	A	B	C=>J
<b>DIMENSIONS</b>			
Door exterior (cm.)	82x200	75x210	92x210
Door interior (cm.)	71x189	63x179	81x199
Window (cm.)	82x60	60x60	41x60 => 60x60
<b>CHARACTERISTICS</b>			
10kHz (dB) attenuation	43.4dB	42.5dB	Check
5KHz (dB) attenuation	41dB	37dB	Check
Global attenuation (± 3 dB)	33dB	31dB	Check
Approx. weight.	500 Kg	500 Kg	770Kg => 1440Kg
Window	Double glazed with PVC frame.		
Door	Double glazed with PVC frame.		
Access ramps	74x74x10cm	No	84x74x10cm
Closing points	4 hinges and 7 anchor points		
Base	Silent blocks		
Exterior table (cm.)	Detachable 113x45x3		
Interior table (cm.)	Yes		
Exterior finish	Water-based varnish		
Interior finish	Water-based varnish + integrated absorbent panels		
Ventilation	Unforced ventilation system via labyrinth / Forced (optional)		
Interior illumination	LED light - 220V 50-60 Hz		
Board connections	Universal		
Preassembled free-field system	Yes		
Floor	Carpet / Washable floor (optional)		
Power supply	110-220 V 50-60 Hz		
Power	50W		



SIBEL S.A.U., Rosellón 500 bajos, 08026 BARCELONA (Spain)  
 National Sales: Tel. +34 93 436 00 08 e-mail: comercial@sibelmed.com  
 International Sales Office: Tel.+34 93 436 00 07 e-mail: export@sibelmed.com  
 Technical Service: +34 93 433 54 50 e-mail: sat@sibelmed.com Fax: +34 93 436 16 11  
 www.sibelmed.com



CE



EN ISO 9001:2015

SIBEL S.A.U reserves the right to modify the technical specifications without prior notice.

**Sibelmed**

FG1702\_EN - S-PREMIUM - V.1.1 - 05/2021